





Add a level of depth and a sense of luxury to any bathroom. Their bold presence and timeless simplicity provide spa-like impressions to homeowners and guests. These enclosures can match any style and provide a truly personal touch to any bathroom with near limitless options available .

PACIFIC SERIES AVAILABLE FEATURES:

3/8" and/or 1/2" thick glass with high-polished edges

Domestic premium aluminum channels

Through-the-glass handles available in a variety of sizes, colors, and styles

Wall-mount, glass-mount, jamb-mount, and pivot hinges in solid brass can be plated or coated to match any decor

Custom engineered doors, panels, notched panels, and transoms

Customized panels can include channel and/or clip anchoring systems

Variety of glass types

Shown at Left: Heavy Glass Enclosure, Wall-mount Hinges, Recessed Channel, 6" Handle (optional)

Shown at Right: Heavy Glass Enclosure, Wall-mount Hinges, Notched Panel, Clips, 8" Ladder-Pull Handle (optional)





PACIFIC SERIES (LEFT)

SHOWN WITH:

1/2" Clear glass

Polished Nickel finish hardware

Full enclosure stabilizing header

Pivot-to-header hinges

6" Traditional C-Pull handle (optional)

Mitered panels set with clips

PACIFIC SERIES (RIGHT)

SHOWN WITH:

3/8" Clear glass

Chrome finish hardware

Wall-mount hinges

8" Ladder-Pull handle (optional)

Transom with clips above door

Mitered panels set in channel





Steam units like the enclosure featured on this page can be the perfect way to bring a relaxing spa into the comfort of your own home. The transom panel above the door keeps steam in during a shower and can be opened to release steam afterwards.



PACIFIC SERIES - EXPRESS HINGE

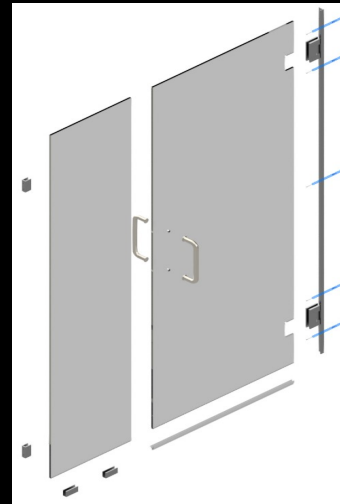
Express Series Jamb-mount door system shown in Brushed Nickel finish and no-fab clip system

Available in 3/8" and /or 1/2" glass

Jamb-mount hinge system is factory-installed and mounts directly to the wall without needing a structural tie-in

Improved water management system with built-in seal

Designed and engineered to effectively cover any previous installation holes



Installation detail for top, middle, and bottom anchor points. Engineered and designed to cover previous installation holes.

PACIFIC SERIES - FIBERGLASS ENCLOSURE

Easy-Lock Pivot system with 3/8" glass shown in Oil-Rubbed Bronze finish and height extensions gives clear, unobstructed entry

Available in 3/8" and/or 1/2" glass options

Base material adds structural stability to fiberglass inserts and the pivot hinge without drilling

Enhanced, independent base offers improved water management without compromising the integrity of the fiberglass insert

Improves vertical entry space with additional wall inserts that support up to 8-foot tall enclosures



Before



After





ATLANTIC SERIES - HYBRID (LEFT)

SHOWN WITH:

3/8" glass panels

1/4" Semi-frameless door with concealed hinge system

Through-the-glass 6" C-Pull (standard)

Brushed Nickel finish

ATLANTIC SERIES - SEMI-FRAMELESS (RIGHT)

SHOWN WITH:

1/4" glass throughout entire enclosure

Polished-edge door with concealed hinge system

Through-glass 6" C-Pull (option)

Oil-Rubbed Bronze anodized finish





Our hybrid and semi-frameless shower enclosures are a great way to combine elegant form and practical function at an affordable price. One of our differentiating features involves our door - our doors open on a concealed hinge that offers a stunning, seamless presentation of the glass. With several handles and a variety of style options available, a semi-frameless enclosure can offer a dramatic improvement.



Simple, classic, economical, and mechanically durable, our framed enclosures are engineered to last a lifetime. They are available in a variety of configurations, from just a simple door to an expanded multi-angle wrap-around enclosure.

ATLANTIC SERIES FEATURES (LEFT)

Our seamless concealed hinge system is elegant and durable

Form-fitting handle accents shape of enclosure

Individually wrapped glass with premium, domestically sourced aluminum gives unsurpassed stability

1/4" glass used for panels – heavier, thicker, and more durable than the 3/16" industry standard

Shown in Brushed Nickel hardware

GULF SERIES BYPASS (RIGHT)

Framed sliding doors

Door-mounted towel bars

Self-contained header rolling system

Individually wrapped glass and premium aluminum gives unsurpassed stability

Shown in Chrome hardware





GULF SERIES - DUET BYPASS (LEFT)

Uniquely designed header system enables both doors to slide seamlessly

Shown with through-glass towel bars

Many custom handle and/or towel bar options available

Available with 3/8" or 1/4" thick glass

Available in Polished Chrome or Brushed Chrome

Can be combined with additional custom panels (not shown)

PC

BC

GULF SERIES - EUROGLIDE (RIGHT)

Distinctive large roller and elegant rod design

Single sliding door with fixed panel

Can be combined with additional custom panels (shown)

Shown with 18" Ladder-Pull handle (option)

Many custom handle and/or towel bar options available

Available with 3/8" or 1/2" thick glass

Available in Polished Stainless, Brushed Stainless, Oil-Rubbed Bronze, or Matte Black

PS

BS

OB

MB





Our specialty bypasses and sliding door systems offer sophistication and distinctive designs that make an everlasting impression.



GULF SERIES - DUOGLIDE (LEFT)

Frameless sliding doors

Elegant header and roller system

Shown with through-the-glass recessed pull

Many custom handle and/or towel bar options available

3/8" glass available only

Available in Polished Stainless, Brushed Stainless, Oil-Rubbed Bronze, or Matte Black

PS

BS

OB

MB

GULF SERIES - SEMI-FRAMELESS BYPASS (RIGHT)

Frameless sliding doors

Shown with through-glass towel bar handles

Many custom handle and/or towel bar options available

3/8" or 1/4" glass available

 **Quality**
Enclosures
America's Shower Door



Semi-frameless bypasses elegantly enhance visibility to help create an open and luxurious feel. These versatile enclosures offer easy access to both sides of the tub or shower."

Make a Statement of Elegance, Class, and Style

Every person and room is different, which is why Quality Enclosures provides the means to customize your enclosure millions of different ways. With so many combinations of colors and styles, finding what matches your taste best has never been easier.

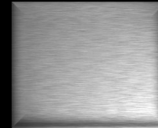


Our powdercoating facilities offer hundreds of possible colors and finishes that can be the correct choice for almost any environment.

ANODIZED FINISHES



Silver / Chrome



Brushed Nickel



Oil-Rubbed Bronze



Platinum



Bright Brass

PLATED HARDWARE FINISHES



Antique Brass



Antique Bronze



Antique Brushed Copper



Antique Brushed Nickel



Black



Brass



Brushed Bronze



Brushed Copper



Brushed Nickel



Brushed Satin Chrome



Chrome



Gold Plated



Gun Metal



Matte Black



Oil-Rubbed Bronze



Polished Copper



Polished Nickel



Satin Brass



Satin Chrome



Satin Nickel



Ultra Brass

Perfect Accents to your Décor

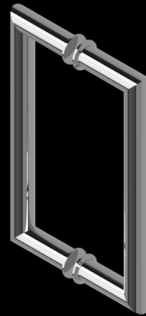
The Quality Collection of handles and towel bars can add that perfect accent to your décor.



Standard C-Pull



H-Pull / Ladder-Pull



Mitered Round Pull



Square Pull



Arch Style Pull



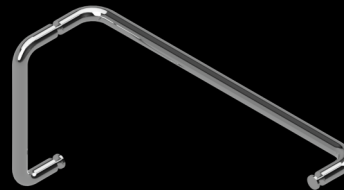
Traditional Pull



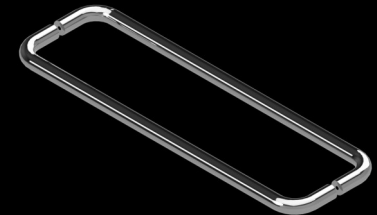
Cushion Knob



Standard Towel Bar



Combination C-Pull Handle Towel Bar

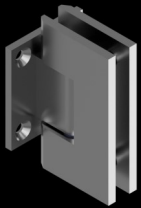


Back-to-Back Towel Bar

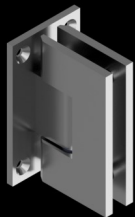


Unparalleled Beauty, Craftsmanship, and Design

The Quality Collection of hinges is the finest in the industry with unparalleled beauty, craftsmanship, and design. Our hinges exceed the industry standards for durability and functionality and are engineered to last for decades.



Wall Mount w/ Short Back Plate



Wall Mount w/ Full Back Plate



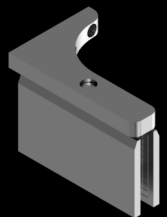
Wall Mount w/ Offset Back Plate



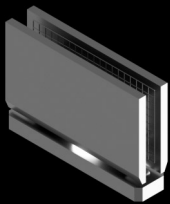
Wall-Mount H-Back Plate



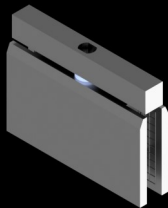
Jamb Mount System



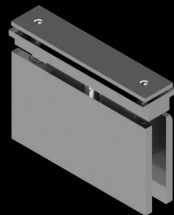
Wall-Mount Pivot



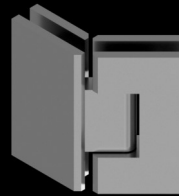
Pivot-to-Curb



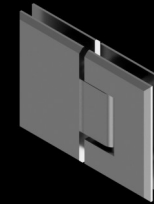
Pivot-to-Header



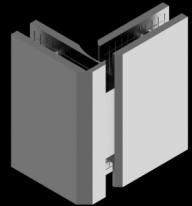
Easy-Lock Pivot Hinge



135° Glass to Glass

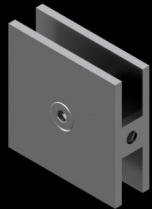


180° Glass to Glass



90° Glass to Glass

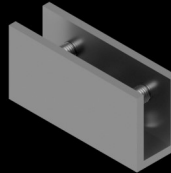
Quality Enclosures offers hardware that provides both safety and style. Whether it's the clean lines of channel along the edge of a panel or clips that offer a more frame-less appearance, there is an elegant solution for every application.



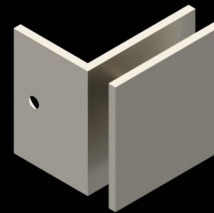
Square Glass Clip



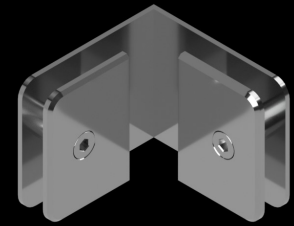
Beveled Glass Clip



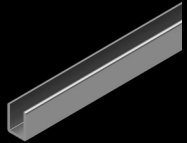
No-Fab Glass Clip



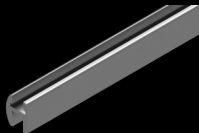
Glass-to-Wall Clip



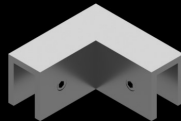
90° Glass-to-Glass Clip



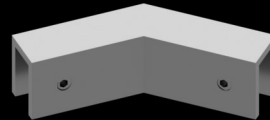
U-Channel



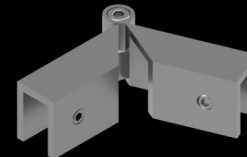
Header



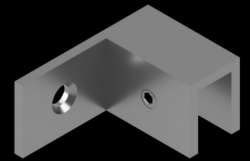
90° Sleeve-Over Clip



135° Sleeve-Over Clip



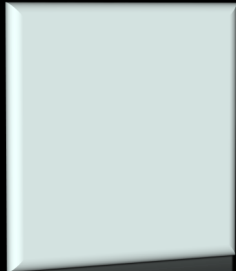
Adjustable Sleeve-Over Clip



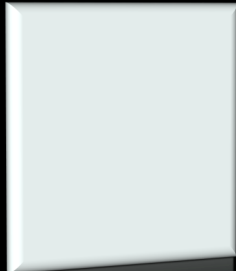
*Wall-Mount
Sleeve-Over Clip*

Finest Raw Materials

Experience the Quality Glass Collection. Each piece of glass is designed, machined, and polished individually for a beautiful effect.



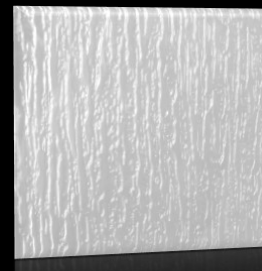
Clear



Low Iron



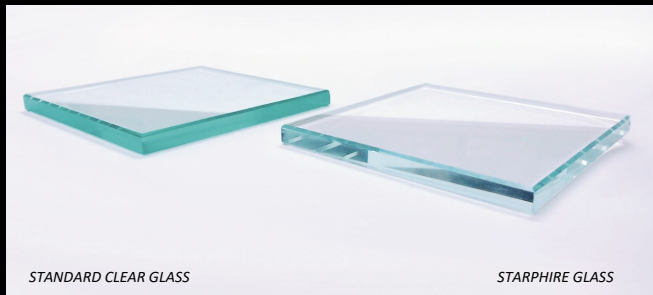
Acid Etch



Rain



P62

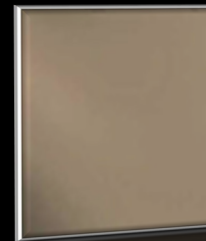


STANDARD CLEAR GLASS

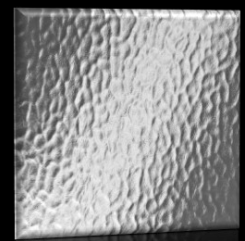
STARPHIRE GLASS



Droplets



Bronze



Obscure

Specialty glass types such as Low Iron, Starphire, Grey 3/8", Glue Chip 3/8", P62 1/4", and more are available at select locations—contact one of our Customer Service Representatives or your dealer for availability and pricing.

Heavy Series Express Series Fiberglass Series Hybrid Series Semi-Frameless Framed Framed Bypass Duet Euroglide Essence Semi-Frameless Bypass

Clear 1/2"	•	•	•						•	•	
Clear 3/8"	•	•	•	•				•	•		•
Clear 1/4"				•	•	•		•			•
Clear 3/16"						•	•				
Low Iron* 1/2"	•	•	•						•	•	
Low Iron* 3/8"	•	•	•					•	•		•
Acid Etch 1/2"	•	•	•						•	•	
Acid Etch 3/8"	•	•	•	•				•	•		•
Acid Etch 1/4"				•	•	•	•	•			•
Rain 3/8"	•	•	•	•				•	•		•
Rain 1/4"				•	•	•	•	•			•
Rain 3/16"					•	•	•				
P62 3/8"	•	•	•	•				•	•		•
P62 3/16"				•	•	•	•				•
Droplets 3/8"	•	•	•	•				•	•		•
Droplets 1/4"				•	•	•	•	•			•
Bronze 3/8"	•	•	•					•	•		•
Obscure 3/16"					•	•	•				•

Disclaimer: The pictures in this document are examples of products that Quality Enclosures, Inc. is capable of manufacturing are not intended to represent items that are universally applicable and able to work well for every application. Every unit we build is made to order using our customer's specifications. Actual products may vary from photographs. Specialty glass available in select locations - availability may vary.

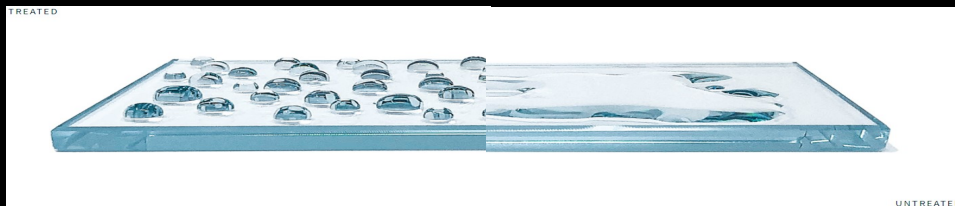
* Also available as Starphire

Glass Protection that Lasts a Lifetime.

Quality Enclosures proudly offers glass protection that uses nano-technology to protect and enhance the look of your enclosure during every day use.



Utilizes the Fusecube™ coating machine to mechanically apply the glass sealant accurately every time



Treated (left)

vs.

Untreated (right)

- Limited lifetime warranty
- Easier to clean and maintain
- 20% more brilliance in glass appearance
- Helps protect against scratches, hard water, and soap stains
- Save money over time - no need to buy special cleaning products
- Available on any type of glass
- Protects all six (6) sides of glass pieces

Visit www.DFISolutions.com for more information





- *Limited lifetime warranty*
- *Applied to single side of 3/8" and 1/2" Clear glass only*
- *Seals single side of the glass surface during the tempering process*
- *Resists buildup of soap and hard water stains*
- *Makes cleaning easier without need of special chemicals*

Visit www.showerguardglass.com for more information





The Quality Promise

Quality Enclosures, Inc. is a family owned and operated company based on family traditions and values. These attributes contribute to our long-standing reputation as a respected leader in the shower door industry. We manufacture and fabricate a complete line of shower and tub enclosures using superior workmanship and the highest quality materials. Whenever we produce a shower door or enclosure, we treat it – from the very beginning of the process to the very end – as if it was going into our own home.

Proudly made in the U.S.A.

*View more products and video demonstrations at:
www.QualityEnclosures.com*

Over 50 Years of Family Tradition and Values

FLORIDA	FLORIDA	FLORIDA	GEORGIA	TENNESSEE	NORTH CAROLINA	VIRGINIA	NEW YORK
2025 Porter Lake Dr. Sarasota p. 941.378.0051 f. 941.377.9245	3028 Mercury Road Jacksonville p. 904.503.9022 f. 904.666.5917	1604 Newport Ave. Deland p. 904.503.9022 f. 904.666.5917	850 Pickens Industrial Dr. Marietta p. 770.590.7337 f. 770.590.7338	2324 Southpark Dr. Murfreesboro p. 615.494.0002 f. 615.494.0057	1301 Mabry Dr. Albermarle p. 770.590.7337 f. 770.590.7338	1815 Ruffin Mill Rd. S. Chesterfield p. 770.590.7337 f. 770.590.7338	101-H Windsor Place Central Islip p. 631.234.0115 f. 631.234.0174